

# **E t n a**

(Incorporated February 15, 1820)

## **E t n a**

# **Sesquicentennial Celebration**

Program June 13-14, 1970

1820 - - - 1970

ETNA SESQUICENTENNIAL  
CELEBRATION

PROGRAM

1970

Written by

BERTHA WHEELER CARTER

## Sesquicentennial Committees

### GENERAL COMMITTEE

Crawford Carter, Jr., Bertha W. Carter, Mrs. Emma Creighton,  
Paul Reynolds, T. S. Mills, Verne S. Babar, Chester Evans.

### MEN'S ACTIVITIES

Bruce Prescott, Don Mitchell, Charles Graves III, Stanley Donaldson,  
Chester Evans, Kurt Davis.

### WOMEN'S ACTIVITIES

Joan Watson, Annie Philbrook, Carolyn MacGree, Rospah Graves,  
Virginia Hopkins, Bernice Donaldson, Edith Evans, Mrs. Ethel  
Underhill, Frances Prescott.

### CHILDREN'S ACTIVITIES

Fred and Anita Mitchell  
Robert and Doris Elston  
Robert and Jean Downing  
Roger and Sandra Burke

### SUPPER COMMITTEE

M. Edna Grange #36

### DANCE COMMITTEE

Lindley and Shirley Underhill  
Clifton and Imogene Burke  
Frank and Barbara Mitchell  
Verne and Joyce Babar

### ANTIQUES AND OTHER DISPLAYS

Howard and Pauline Carter  
Crawford and Bertha Carter  
Theresa Reynolds  
Mrs. Netha Dow  
Frank and Doris Adams  
Lillian Graves  
Ethel Underhill  
Ethel Friend

PUBLICITY

Chester Evans  
Edith Evans  
Joyce Babar  
Verne Babar

PARADE

Crawford Carter, Jr.  
Emma Creighton  
Jean Carter  
Robert Creighton

PROGRAM

JUNE 13th, 1970

12:30 p.m. Parade to town at Camp Euna and march via Route 2  
to Community Hall.

Following the Parade:

Introduction of guests and remarks. Open house all  
afternoon at Community Hall until 5:00 p.m.  
Pony pulling and children's activities

5:00-6:30 p.m. At Grange Hall, Chicken Pie Supper  
\$1.50 adults, and children under 12, 75c

8:30 p.m. Sesquicentennial Ball at S.A.D. #38 Gym, Route 143  
with music by Old Sol's Band.  
Antiques on display at Community Hall.

JUNE 14th, 1970

9:30-10:30 a.m. Church Services at Camp Euna.

12:00- 1:30 p.m. At Community Hall, Chicken Barbecue  
Adults \$1.50, children under 12, 75c

1:30 p.m. Planting Time Capsule, Monument Grounds

2:00 p.m. Baseball game at Memorial Field at S.A.D. #38 grounds

MODERATOR

Crawford W. Carter, Jr.

TOWN CLERK AND TREASURER

Stanley P. Donaldson

SELECTMEN, ASSESSORS, OVERSEERS OF POOR

Verne S. Babar, John T. Graves, Lindley Underhill

SUPERINTENDENT OF SCHOOLS

Norman P. Soucie

SCHOOL DIRECTORS

George Bubar, A. L. Conant, Clair S. Carter

TAX COLLECTOR AND EXCISE TAX COLLECTOR

Alphonso Conant

CONSTABLE

Paul Reynolds

FENCE VIEWERS, SURVEYORS OF WOOD, BARK,  
AND LUMBER

Herbert H. Graves      Dean S. Reynolds

HEALTH OFFICER

Mrs. Jean D. Carter

FIRE INSPECTOR

Dean S. Reynolds

## FIRST SETTLERS

Written by BERTHA WHEELER CARTER

Benjamin Friend and his cousin, Phineas Friend, came to what was then a wilderness and built the first "log cabin without boards, nails, or glass" in May, 1807. This was apparently on the lot where Miss Ethel Friend's home now stands.

The first white child born in Etna (then called Crosbytown Plantation) was John Crosby Friend, son of Phineas Friend, born October 24, 1808.

The first frame house in Etna is still standing and is the property of Stanley P. Donaldson, a descendant of the builder, Reuben Dennett. Mr. Dennett also built the second frame house, now occupied by Richard Donaldson, another descendant.

Other early settlers were Bela Sylvester, James Harden, Reuben, Dennis and John Dennett, John Jackson, John Benjamin. These people built dwellings in the northern part of the town.

Early settlers of Etna Center were the Rev. Edward Carter and his wife, Ruth, who had a family of thirteen children. They lived at what is now called the "Pinkham place" owned by a descendant of the Rev. Carter, Crawford W. Carter, Jr. This farm was also the property at one time of John Farr, one of the early settlers at Etna Center.

In the southern part of Etna, the Syvesters, Amos and Dudley, built frame houses in the late eighties. One of these homes still standing is occupied by the widow of a descendant, Mrs. Perley E. Sylvester.

### THE SCHOOLS

The first school was taught by Miss Bethiah Friend in a log cabin 8 x 10 feet, in 1808. Schools were then supported by subscription, each family contributing as much as it could afford. The teachers frequently "boarded round", spending a week or so in a family. Salaries were very small, perhaps a dollar or two a week, and the teacher's duties included building fires and sweeping the floor.

At one time there were eight "district" schools in Etna as it was considered necessary to have a school within walking distance of each family.

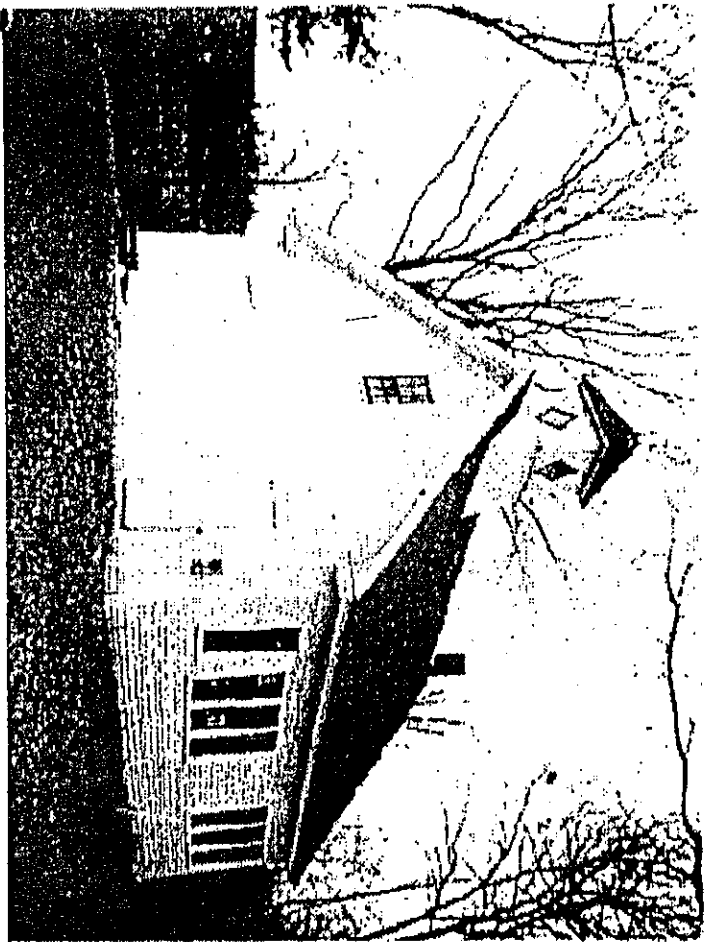
The first hundred years saw many changes in the education of youth in Maine. By 1920, the number of schools maintained had decreased to four—McKinley School at North Etna, Lincoln School, Etna Center, Washington School at West Etna, and Langfellow School at South Etna. The first "supervisor" of schools for Etna was Miss Jane Sanborn. Other early "town supervisors" were Otis Friend, Charles Dennett, Edith Ames and John Carter. The writer recalls Mrs. Ames' visits as being occasions for the best behavior on the part of pupils and teacher. When the august personage, the "supervisor," departed, there was a general sigh of relief and relaxation. These people had the responsibility of visiting the schools at least once or twice a year and of making a report to the state department of education.

The first superintendent of schools (under the law of 1918 which permitted a group of towns to unite as a "union" and hire a professional superintendent) was John Paton. He was succeeded by William Hebard, Mr. Henry, Mr. Harris, William C. Bailey, and Mrs. Bertha W. Carter who held the office from 1930 until 1953 when she resigned to enter the State Department of Education as an elementary supervisor. The towns in this union from 1918-19 until 1936 were Carmel, Dixmont, Etna, and Newburgh. Stetson and Escoter were added in 1936.

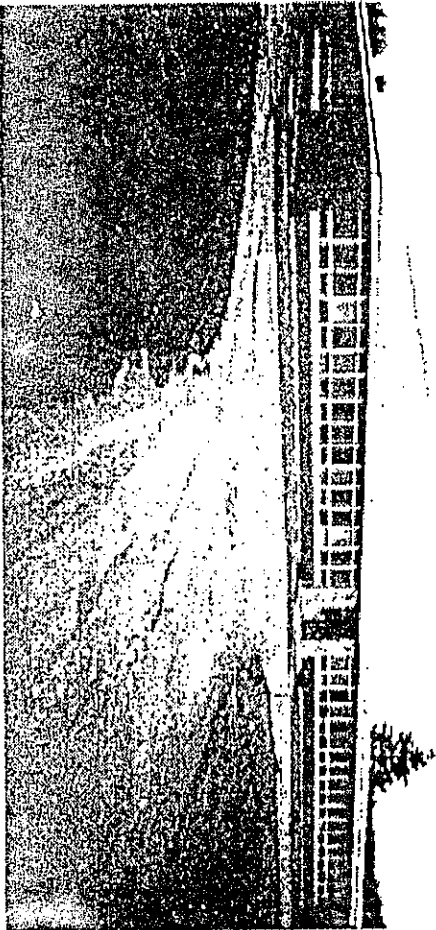
In 1954, the citizens of Etna and Dixmont met in separate town meetings to vote to form a school district (#38) in order to construct a modern school building. This attractive building, housing grades sub-primary through eight for the district, has now been in use for several years. Secondary pupils are bussed to Hermon High School. The directors of S.A.D. #38 from Etna are A. L. Conant, George Bubar and Clair Carter. The superintendent of schools is Norman P. Soucie.

#### POST OFFICES

The first post office in Etna was established in 1825 with the Rev. Daniel McMaster as first postmaster. In 1845, a second post office was granted at Etna Center with Mr. Timothy Carter, postmaster. A political shift in Washington caused a change to Mr. John Tarr as postmaster, then as the political scene changed again, he was succeeded by Miss Sarah Carter who held the post for many years. The office was in the house now owned by C. W. Carter, Jr.



Lincoln School, Emma Center



S.A.D. #38 School



A third post office was established at South Enna in 1871, Miss Margaret Pichey, postmistress.

At present, the office is at North Enna, Richard Mills, postmaster. This post was held for many years by Alva Sylvester who had the post office, the telephone central office, and a general store on the location of the present Charles B. Graves' General Store. Leigh-ton Sylvester was postmaster following Alvah Sylvester, and was succeeded upon his retirement in September, 1953, by R. H. Mills.

#### "RURAL FREE DELIVERY"

The first mail delivery in Enna in 1821 was made by a man on horseback who made the trip from Hampden to Newport once a week. A post office at Carmel was then the only one on this twenty-four mile route. Subscribers to the Bangor Weekly Register, the only newspaper in these parts at that time, paid the carrier a cent for each paper delivered.

After the Post Office Department authorized the present rural route, Joseph "Juh" Sylvester was one of the early carriers. In 1907, John E. Carter became a substitute carrier, and was appointed full time in 1913. He held this position until 1945. He was succeeded by a nephew, Crawford W. Carter, Jr., our present rural carrier.

#### STORES

It is not known who owned the earliest general stores in Enna. Sometime in the 1870's, Horace H. Wheeler had a store in South Enna which burned. He then moved to Danastus in Carmel where he had a store until 1907 when he again bought a store in Enna across the railroad tracks in the northern part of the town. He sold this business to C. B. Friend and Sons. It is now owned and conducted by Stanley P. Donaldson, who also has a large snowmobile business.

The store owned and operated by Charles B. Graves, Jr., was built by Alvah Sylvester following a fire which destroyed his store located at the site of Enna Post Office and another store operated by Guy Wood. Following Alvah's death, the store was sold to a nephew, Dudley E. Carter, who operated it until 1945 when he sold it to Alphonse Conant. Mr. Conant operated the store a short time, selling to George Curtis, who operated it for several years before retiring and selling to the present owner, Charles Graves, Jr.

Clarence Wilbee and son, Carl, operated a store at the corner

of the station road and U. S. Rte. 2. It has been renovated and turned into a dwelling by Thomas Gallagher, who resides there.

#### FRATERNAL ORGANIZATIONS

The present I.O.O.F. hall was built in 1874 by a stock company for use as a cheese factory. Cheese was made here for several years but as it appeared to be a losing proposition the hall was sold to the I.O.O.F. who repaired and remodeled it. Rebekah and Odd Fellow meetings are still held here.

The Mt. Etna Grange #36, Patrons of Husbandry, was instituted by Amos K. Walker of Hampden in September, 1874, with 26 charter members. The hall was built by a stock company and contained a hall called Locke's Hall in the upper part with several stores beneath. In 1906, the Grange purchased it from one of the heirs of William K. Locke. It has been used by the Grange ever since.

The Merryworker 4-H Club led presently by Mr. and Mrs. Crawford W. Carter, Jr., has been very active in providing leadership, social activities, and an opportunity for members to participate in various project skills. They recently received their 23rd Seal of Achievement award, and have forty members enrolled in 100 projects. Other leaders have been Miss Ruby Burlock who organized the club in 1937, the late Mrs. Amy Marston, Mrs. Agnes Sylvester, and Mrs. Bertha Carter.

West Penobscot Post #107 American Legion and its Ladies' Auxiliary was organized at the old Etna Hotel in 1932 with Dept. Adjutant James L. Boyle of Waterville in attendance. Following its organization the Post met for several years at the Damascus School in Carmel. At the close of World War II several new members were added to the Post and they moved their headquarters to the old Carmel Town Hall. In September of 1964 they bought the Stillman Logging barbershop building in Carmel village and renovated it into a meeting place, also leasing space to the town for a town office. They are very active and organized a junior boys' baseball team in 1968, as well as other projects.

For several years, Etna had a Temperance Society, organized August 1, 1828, the first temperance society in Penobscot County. Penobscot County History states that "Etna had the name of being a 'cold water town'" and gives an amusing account of Deacon Crabtree's barn-raising—"without rum."